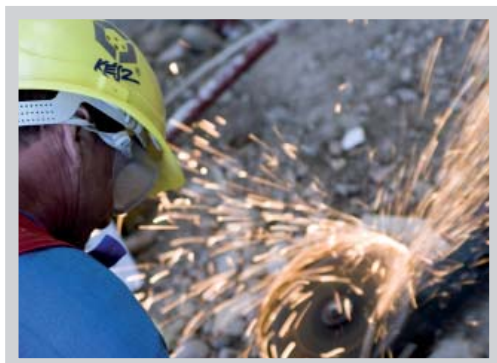


WHERE BUSINESS **MEETS REQUIREMENTS**



KÉSZ GROUP

For more than a quarter century ago KÉSZ was founded as a family enterprise, and for today it turned into a holding, which employs more than 1.300 people in Hungary and the neighboring countries; and its income has reached 70 billion HUF. Through its member corporations KÉSZ Group is present on the building construction market, as well as in the building element manufacturing, property development, facility management, fleet management and environment industry.



KÉSZ Holding Inc.

KÉSZ Holding Inc. is the leading company of KÉSZ Group, which holds together the resources of the member companies, and offers complex services – construction with design, property development and management – to the investors. The great advantage and virtue of our Holding is, as opposed to most of our competitors, that we can implement various types of facilities on our own properties, with own machines, equipment, through own innovations and we provide the expertise and tools for developing and operating them. The Holding is also active in the neighboring countries.



Our main target is to satisfy our clients' demand in the field of complex, high quality and in-time solutions, from Ideas to realization.



KÉSZ Building and Construction Company

KÉSZ Building and Construction Company is the flag holder of KÉSZ Group. We provide full-scale services in the building industry as far as general construction, design, structure building, building mechanical and electrical execution and technological erection. Among our more than 3.600.000 m² references we can represent industrial halls, logistic centers, power plants, offices, public buildings, stadiums, hypermarkets, airport terminals, shopping centers and hotels.



KÉSZ
É P Í T Ó

KÉSZ Industrial Manufacturer Ltd.

KÉSZ Industrial Manufacturer Ltd. provides the manufacturing services for the companies of KÉSZ Group and for individual clients. The three main products of the company are steel structures, architectural products and electrical products. The objective of KÉSZ Industrial Manufacturer Ltd. is aiming at satisfying its clients' needs in terms of quality and deadlines all around the world.



KÉSZ
IPARI GYÁRTÓ KFT.

Matech Ltd.

Matech Ltd. is the most recently launched company of KÉSZ Group, offering clients both in Hungary and Central Europe international experience and an up-to-date machinery & equipment pool. Our activities include the installation of steel structures, technological installation, mechanical and electrical construction as well as technical maintenance. Matech's vision is also embodied in the integration and utilization of renewable energies.



Professional history of KÉSZ GROUP

1981 – Establishing the KOMPLEX working party, the predecessor of KÉSZ Group.

In the early 1980s the government acts allowed the Hungarian residents to take part in economic operation. Mihály Varga established the Komplex working party with part-time workers. The firm specialized in engineering and structure installation, was located in Kiskunhalas. With the intention of reflecting the company name they wanted to provide complex services.



1996 – The turning point

In 1996 KÉSZ was facing a turning point. The company achieved an important role in the Hungarian construction market. Its income presented marvelous increase to HUF 7 billion. We succeeded in winning several projects of international investors (e.g. REWE warehouse in Alsónémedi and Suoftec plant of 40.000 m² in Tatabánya). From that point KÉSZ pursued continuous growth. We entered new markets, our income and number of successful projects increased.



1998 – Industrial parks

By buying the assets and properties of Traverz Inc. in 1998 KÉSZ got involved in steel structure manufacturing. We started KÉSZ Industrial Park in Kecskemét operating as an architectural logistical center and the First Industrial Park of Szeged.

1999 – KÉSZ Group was established

Traverz Ltd., the first subsidiary was bought KÉSZ Group was formed. In 2000 KÉSZ established an innovative and modern plant of HUF 3 billion with a capacity of 25 000 tons of steel per year. The most significant project of the year was the execution of Jabil Circuit manufacturing plant in Tiszaújváros.

2000 KÉSZ Mester Office Building

The construction of the KÉSZ Mester Office Building in Budapest was an own investment of KÉSZ Group. The office building and parking lot has a total floor space of 24.000 m².

2001 KÉSZ in Romania

We achieved 2nd place in the Hungarian construction market regarding our yearly turnover. We started the Centre for Processing Structure Steel and the production of electric switchboards and moved the Centre for Architectural Products in Kecskemét. We entered the international market by setting up the first KÉSZ subsidiary in Romania.

2004 KÉSZ in Ukraine

To keep the tendency of improvement we set up our second subsidiary in Ukraine under the name of KÉSZ in UA. Today KÉSZ in UA is the most successful KÉSZ company abroad, it has a number of projects for food manufacturer companies, industrial manufacturer companies and governmental organizations.



2007 KÉSZ Holding Inc.

KÉSZ Group, celebrating its 25th anniversary of establishment, arrived at a milestone in 2007: the parent company and its subsidiaries established a Holding organization in order to clean up their profiles and increase their efficiency. KÉSZ Holding Inc. is the leading company of KÉSZ Group, which holds together the resources of the member companies, and offers complex services – construction with design, property development and management – to the investors with them. KÉSZ Holding Property Development and Asset Management Inc. were established and will manage the company group in the future.

2008 KÉSZ in Bulgaria

The market situation made the setting up of our third subsidiary possible in Bulgaria.

2010 KESZ in Serbia

KESZ D.O.O Belgrade was founded in Serbia as a subsidiary of KÉSZ Group. KESZ Serbia has accomplished successful projects for automotive companies and manufacturer companies in Serbia and Croatia as well.

2011 KÉSZ in Russia

The Moscow Office of KÉSZ OOO opened in the summer of 2011. Our colleagues in Russia are in close cooperation with KÉSZ Ukraine.

2008 KÉSZ Building and Construction Inc. and KÉSZ Industrial Manufacturer Ltd.

KÉSZ Group went through strategic changes in 2008. KÉSZ Building and Construction Inc. KÉSZ Consulting Ltd. and KÉSZ Real Estate and Investment Management Ltd. were established. Production was organized into a separate company, KÉSZ Industrial Manufacturer Ltd.

2011 Matech Ltd.

We are sure to be on the right track with our reorganization process started in 2007, about to be brought to a completion in our days as it is evident from the successful implementation of Ferihegy Airport and Mercedes Kecskemét projects, as well as with our profile and portfolio cleaning efforts. Our strategic firms, KÉSZ Building and Construction Inc. and KÉSZ Industrial Manufacturer Ltd. both floated in 2008, have become key players in the Hungarian building and construction market in their own right.

Following the decision by the Board of Directors of KÉSZ Group, the third strategic firm of KÉSZ Group's construction division, Matech Ltd. was founded in January 2011. Matech's activity scope covers the installation of steel structures, technological installation works, building services and electrical installation, production and installation of switchboxes and architectural products as well as renewable energy technologies.





Complex services from KÉSZ

Our company with several billions of yearly turnover is a determining factor in the Hungarian building constructional market. Providing a vast range of high quality services to our customers and business partners remains the watchword for us. KÉSZ meets development objectives to induce its ability of carrying out a variety of investments based on KÉSZ expertise and resources.



Technical engineering

Product manufacturing in the KESZ Industrial Park

- Steel structures
- Architectural products
- Electrical distribution boxes



Execution:

- General Contracting
- Assembly of steel constructions
- Building of reinforced concrete constructions
- Technological assembly
- Assembly of the electrical works of building
- Assembly of building service engineering
- Interior design
- Sales of structural-steel products, outdoor and indoor metal covers, building units, industrial gates and CAD-software
- Sales and installation of sunlight protecting and shading equipment
- Environmental projects, hydraulic engineering
- Sales of building electrical units, building electrical installation
- Sales of building mechanical units, building mechanical installation
- Planning and implementation of IT systems;
- Running of company IT systems (outsourcing)
- Facility development, application and management
- Research and Development
- Technical maintenance using renewable energy
- Hydraulic and civil engineering



Technical engineering

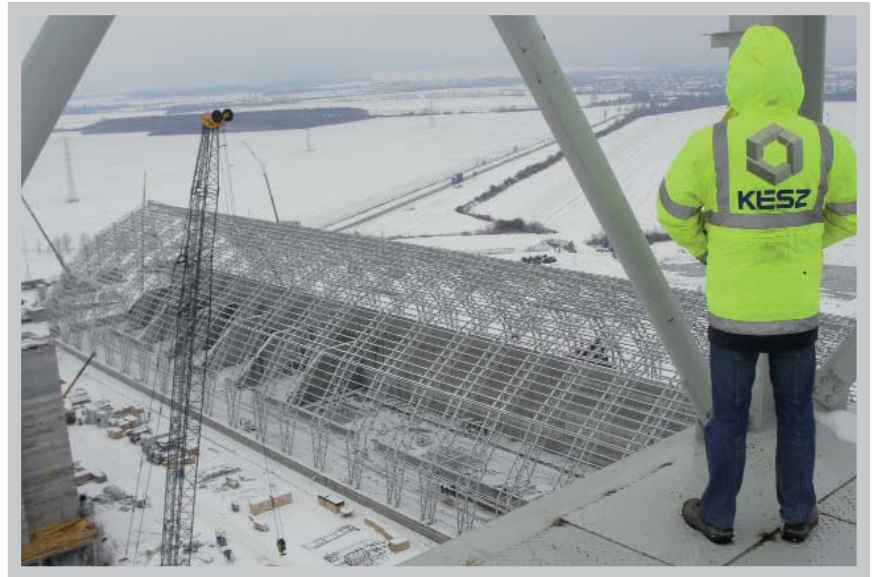
Our design offices are able to offer solutions to the customer's needs with sort deadlines, at any stage of the design process. Some references of Technical Design Board: complex planning of office buildings, halls, shopping centers, education and sport facilities, industrial and residential buildings.

Product manufacturing in the KESZ Industrial Park:

Our Company has established its manufacturing base in Kecskemét, KÉSZ Industrial Zone. At our remises, we manufacture steel structures, constructional steel semi-manufactured elements, metal covers, roofing sheets, panels of suspended ceilings and shielding, electric switchboards and distribution centers. The own production ensures great flexibility for the realization of our construction projects and we can serve our customers' requirements more effectively.

General Contracting

As a main contractor we are able to realize the most diverse buildings, from planning to turnkey delivery. Following planning building and obtaining permits, we ensure necessary building elements instruments and skilled people of the realization; we tune the execution recruitment and participation of sub-contractors. Construction is done by our skilled professional teams, executing construction of steel and iron framing, crusting, light construction assembly and technological assembly and doing building electrical and mechanical constructions. The job of a main contractor has been the main profile of our company from the very beginning; we can be proud of realizing numerous buildings and building complexes. The most significant references of ours are from the field of industry: we have realized several production and assembly halls and plants acting as an investor as well. Significant part of our orders comprises trade buildings: we have obtained outstanding experience with construction of hypermarkets, shopping and leisure centers, warehouses, logistics centers and special shops. In our reference list, you will find the color palette of public buildings: construction of office buildings, hotels, civil, educational and cultural centers, health and service centers, traffic objects and church facilities; ordered mainly by state organs and municipalities. We have significant experience in the field of residential park construction, and in doing building restoration and renovation – planning and execution. In the field of municipal engineering, we do construction of various monolith foundations, machine foundation, industrial floor, roads, junctions, railway tracks, environmental reservoirs, treatment plans and canals.



As a main contractor we are able to realize the most diverse buildings, from planning to turnkey delivery. Following planning building and obtaining permits, we ensure necessary building elements instruments and skilled people of the realization; we tune the execution recruitment and participation of sub-contractors. Construction is done by our skilled professional teams, executing construction of steel and iron framing, crusting, light construction assembly and technological assembly and doing building electrical and mechanical constructions. The job of a main contractor has been the main profile of our company from the very beginning; we can be proud of realizing numerous buildings and building complexes. The most significant references of ours are from the field of industry: we have realized several production and assembly halls and plants acting as an investor as well. Significant part of our orders comprises trade buildings: we have obtained outstanding experience with construction of hypermarkets, shopping and leisure centers, warehouses, logistics centers and special shops. In our reference list, you will find the color palette of public buildings: construction of office buildings, hotels, civil, educational and cultural centers, health and service centers, traffic objects and church facilities; ordered mainly by state organs and municipalities. We have significant experience in the field of residential park construction, and in doing building restoration and renovation – planning and execution. In the field of municipal engineering, we do construction of various monolith foundations, machine foundation, industrial floor, roads, junctions, railway tracks, environmental reservoirs, treatment plans and canals.

Steel structures

With 25.000 square meters area, our Steel Structure Manufacturing Center is one of the most modern institutions of the kind in Hungary and Europe; production capacity exceeds 18.000 tons annually. Its main profile is: technological steel construction and framework of heavy industries, energetic, building material, chemical and environmental establishments. Besides, a decisive part of the others of our factory is respected by the steel frameworks of buildings with diverse functions (manufacturing halls and warehouses, logistics centers, hangars, sport halls, shopping centers). Our factory puts great emphasis on the quality surface protection which, thanks to an investment of ours, is realized in a totally closed system. We sell our steel productions in Hungary and all over the world.



Steel structure erection

The steel structure assembly department belongs to the newest strategic company of KÉSZ Group, Matech Ltd.; Matech Ltd. coordinates the steel structure assembly units. Our company does execution and assembly works of frameworks and heavy- medium and light steel structures for building of machine, food and building material industry, agriculture, energetic, environmental and sports facilities, and construction of bridges and conveyors. Steel constructions of the projects are delivered by our production center in Kecskemét. The quality of our steel construction assembling activity and through grounding of our experts is proven by national and international professional acknowledgements.



Building of reinforced concrete structures

Our Company has outstanding references in production of monolith reinforced concrete constructions and prefabricated reinforced concrete structures, besides constructing buildings with steel frameworks. Our profile contains: construction of deep foundations and industrial floors, buildings of carrier assemblies, processing and assembly of concrete steel, sheeting and concrete work-in. Our experts have delivered high volume others for building of sewage purifications plants, bulkheads, walls, ceilings and grandstands.



Technological assembly

Our Technological mechanics are specialized in the assembly and installation of machine equipment, appliance of the constructed industrial complex and technological lines. We do technological assembly of buildings for the construction, energetic, oil, chemical, machine industry, agriculture and environmental objects.



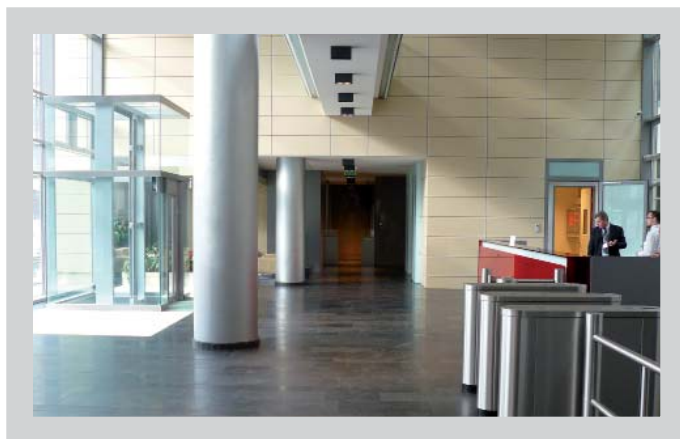
Building electrical assembly

The building electrical department of Matech Ltd. ensures the complete electrical assembly work for buildings, starting with transport through mounting, installation, ending with measurement and maintenance. Our special team participates in the main contractor's tasks of KÉSZ, and fulfills own separate assembling projects. Outstanding project of our building electrical team are constructing and assembling building electrical systems of industrial and trade buildings, cultural centers and public buildings.



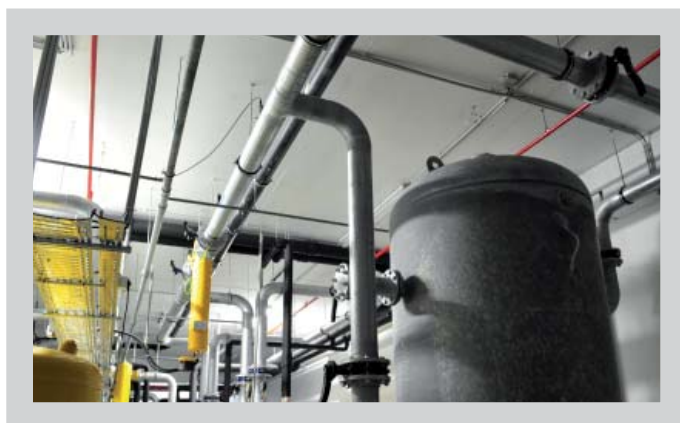
Building mechanical assembly

The building services engineering department of Matech Ltd. does the assembly, installation and maintenance works of water systems, heating systems, air conditioning and kitchen technological systems. The special team contributes to the main contractor's tasks of KÉSZ Group and fulfills own separate assembling projects. The most significant references of our building services engineering department are represented by the mechanical construction of industrial, trade buildings, stadiums, office buildings, public buildings, health and recreational centers.



Civil and Hydraulic Engineering

The Civil Engineering Directorate of KÉSZ Building and Construction Company was set up on 1 September 2011. The team features a highly skilled staff of specialists with extensive professional experience and references. Under the direction of authorized senior building site inspectors, designers and technical supervisors, a well-prepared and close-knit team, including skilled physical staff resources with many years of experience and up-to-date mechanical equipment, is available to undertake the design and construction of civil engineering structures, as well as to provide technical supervision and inspection for such projects.



Architectural products

Our Architectural Product Manufacturing Center has made arrangements to produce and distribute architectural sheet elements and metal covers. The plant manufactures trapezoidal sheets, half stuff and reinforcement connections for construction of reinforced concrete frames. Also, the production lines of our sheet center issue Luxalon metal covers for outdoor and indoor use, and suspended ceiling elements and shielding aluminum panels. One production line – which can be mobilized – is producing Rib-Roof roof covering sheets with sliding ribs, in plane and bent forms. We also manufacture fine sheet-panels with bent edge, for closing building covers and for individual shapes. Our Product Manufacturing Center distributes Mitsubishi Chemical's special paneled layered sheet product, which is manufactured in various colors with aluminum or metal alloy cover. Assembly, sales and installation of the products are also arranged by the colleagues from our Architectural Product Manufacturing Center.

Electrical distribution boxes and building electrical parts

Our Electrical Product Manufacturing Center assembles the most diverse electric distributing switchboards, main distributors, sub-distributors, building installation distributors, distributors for mechanics, phase compensators and bunk-house distributors from the elements of the biggest producers of components. The plant qualified equipment supplier for Schneider Electric and Moeller Electric, besides Siemens by now. The center numerous references such as shaping electrics for industrial plants, trade and cultural centers, educational institutions and hospitals, and it has entered into the market segment of industrial investors (heavy industry, energetic, chemical industry) as well. Thanks to former orders, we managed to purchase the newest license from Siemens, which means that our plant manufactures the so-called Sivacon drawer-system electric cabinets of the German firm, up to a range of 6300A. The employees of the center have experience with the assembly of Schrack, General Electric and Legland equipment as well. Our colleagues, besides installing electrical site networks of buildings constructed by KÉSZ Group are ready to grant servicing and maintenance work for outside partners as well.



industrial plants, trade and cultural centers, educational institutions and hospitals, and it has entered into the market segment of industrial investors (heavy industry, energetic, chemical industry) as well. Thanks to former orders, we managed to purchase the newest license from Siemens, which means that our plant manufactures the so-called Sivacon drawer-system electric cabinets of the German firm, up to a range of 6300A. The employees of the center have experience with the assembly of Schrack, General Electric and Legland equipment as well. Our colleagues, besides installing electrical site networks of buildings constructed by KÉSZ Group are ready to grant servicing and maintenance work for outside partners as well.

Strategic Projects 2010–2011

Budapest Liszt Ferenc International Airport Project

The last month of the turbulent year 2008 had a huge success in store for KÉSZ. The company won the public procurement tender for the reconstruction and development works of Budapest Airport, a strategic project for Hungary.

The tasks of our company include preparing the construction plans of the operating airport, the demolition and reconstruction of the existing buildings (Terminal 2A and 2B) and the general construction of the buildings in the airport's monitoring and commercial area, Sky Court and landing stage B. The project includes the assembly of 52 elevators, 42 escalators, package-handling technology and the manufacturing and assembly of the 70 metres wingspan steel roof structure. These tasks can only be fulfilled by a professionally prepared, self-sufficient team such as KÉSZ Group. The approximately 40 projects we run throughout Europe guarantee the quality and professionalism of our work.



Mercedes Project, Kecskemét

In the year 2008 the traditional German automotive company Daimler decided to move one part of the manufacturing capacity to Kecskemét, Hungary. Mercedes selected KÉSZ Group to build the first and largest production facility in their newly established manufacturing plant. KÉSZ is required to build a 50.000 m² varnishing facility and storage facility for car bodies, and an ELT building for electrical distribution. In 2010 KÉSZ started to execute the 16.000 m² Central Office building and the main gate building to. The manufacturing division of KÉSZ will provide steel structures and assembling services for upon named and many other buildings as part of this huge investment.



**KÉSZ Mester Office Building**

H-1095 Budapest, Mester utca 87.

Tel: +36 1 4766 500

Fax: +36 76 801 567

E-mail: bpiroda@kesz.hu

Szeged Office Building

H-6722 Szeged, Gutenberg utca 25-27.

Tel: +36 62 566 600 Fax: +36 62 566 699

E-mail: szegediroda@kesz.hu

Kecskemét Industrial Park

H-6000 Kecskemét, Izsáki út 6.

Tel: +36 76 515 200 Fax: 06 76 515 298

E-mail: kecskemetititkarsag@kesz.hu

www.kesz.hu